



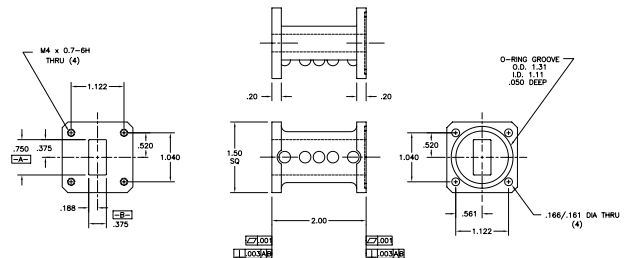
Ku-Band Receive Reject Filter

Model 16413

This uplink filter not only provides isolation to the downlink band, but it also suppresses close-in LO operation (13.05 GHz).

Specifications:

Passband:	13.75-14.50 GHz
Insertion Loss:	0.2 dB Max
VSWR:	1.2:1 Max
Reject Band:	10.70 - 12.75 GHz
Rejection:	30 dB Min 20 dB Min @ 13.05 GHz
Flanges:	WR75 Cover (Input) WR75 Grooved (Output)
Weight:	0.12 lbs (0.054 Kg)
Dimensions:	2.0" x 1.5" x 1.5" (51mm x 38mm x 38mm)
Finish:	Chem Film Per MIL-C-5541C Class1A



MICROWAVE FILTER CO., INC.
6743 KINNE STREET, E. SYRACUSE, NY 13057
E-Mail: mfcsales@microwavefilter.com

800-448-1666 • 315-438-4700
Web: www.microwavefilter.com