



Ku-Band Bandpass Filter

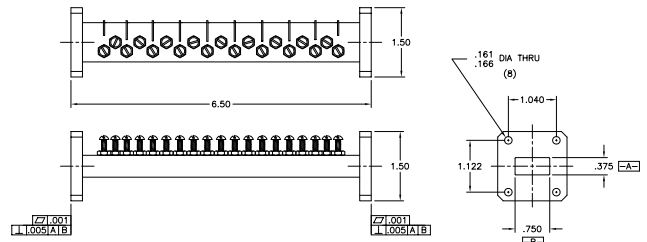
Model 16709

True “bandpass” characteristics make this filter the choice to reject interference from the transmit band **above** and potential interference from sources **below** the operating band, making it more versatile than a simple transmit reject filter.



Specifications:

Passband:	10.95 - 12.75 GHz
Insertion Loss:	0.5 dB Max
Passband VSWR:	1.2:1 Max
Rejection:	50 dB Min from 14.0-14.5 GHz 50 dB Min from 10.40-10.60 GHz
Pressurization:	Sealed to 5 PSIG
Flanges:	WR75 Cover
Weight:	0.52 lbs (0.2 Kg)
Dimensions:	6.5" x 1.5" x 1.5" (165mm x 38mm x 38mm)
Finish:	Gray Lacquer



MICROWAVE FILTER CO., INC.
6743 KINNE STREET, E. SYRACUSE, NY 13057
E-Mail: mfcsales@microwavefilter.com

800-448-1666 • 315-438-4700
Web: www.microwavefilter.com