

LTE Block (A, B or C) Bandpass Filter (Lower 700 MHz Band)

Model # 17890

Application:

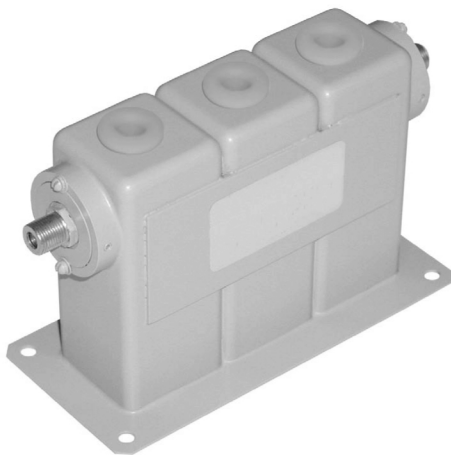
Paired block LTE operations (A, B or C) conflict with each other causing interference to one of the blocks.

Solution:

Install a bandpass filter on the affected block that will isolate it from the interfering block.

Features:

- True “bandpass” response provides isolation from virtually all other out-of-band sources of interference.
- Models also available for unpaired D and E-block applications.

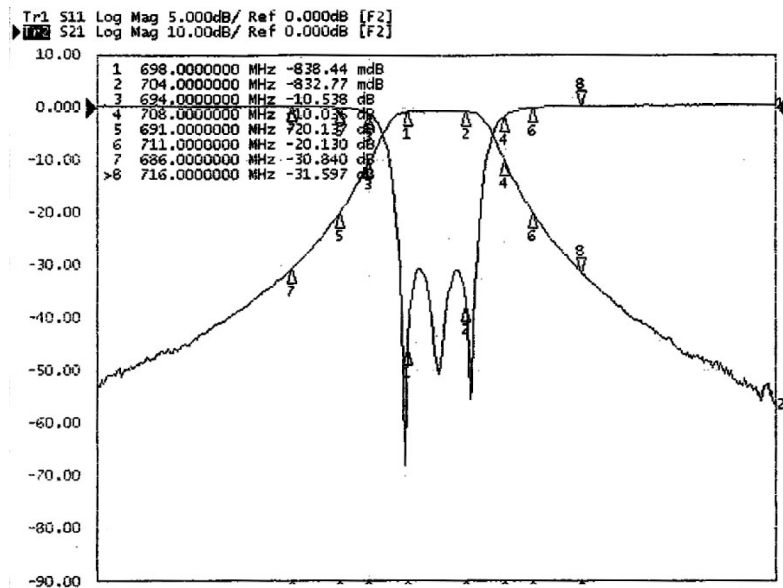


Specifications:

Model #	Passband	Paired Block Rejection (Typ.)
17890-A(L)	698-704 MHz (<i>Lower A</i>)	45 dB @ 728 MHz (<i>Upper A</i>)
17890-A(U)	728-734 MHz (<i>Upper A</i>)	45 dB @ 704 MHz (<i>Lower A</i>)
17890-B(L)	704-710 MHz (<i>Lower B</i>)	45 dB @ 734 MHz (<i>Upper B</i>)
17890-B(U)	734-740 MHz (<i>Upper B</i>)	45 dB @ 710 MHz (<i>Lower B</i>)
17890-C(L)	710-716 MHz (<i>Lower C</i>)	45 dB @ 740 MHz (<i>Upper C</i>)
17890-C(U)	740-746 MHz (<i>Upper C</i>)	45 dB @ 716 MHz (<i>Lower C</i>)

Common Specifications:

Passband Loss:	1 dB (Max.)
Passband VSWR:	1.5:1 (Max.)
Rejection:	20 dB (Typ.) ± 10 MHz from Passband Center
	30 dB (Typ.) ± 15 MHz from Passband Center
	50 dB (Typ.) ± 35 MHz from Passband Center
Impedance:	50 ohms
Connector:	N, SMA or BNC (female)
Weight:	1lb (0.455Kg)
Dimensions:	5.2" x 2.4" x 3.3" (excluding connectors)
	(132mm x 61mm x 84mm)
Finish:	Grey Lacquer



Model 17890 - A(L) - Typical Response



MICROWAVE FILTER COMPANY, INC.

6743 Kinne Street, East Syracuse, NY 13057 • Toll Free: 800-448-1666 or 888-206-6610

www.microwavefilter.com • email: mfcsales@microwavefilter.com • International: 315-438-4700