



Ka-Band Transmit Reject Filter

Model 19082

This TRF provides deep rejection of the transmit (Ka)band with minimal effect on the receive (K)band.

- Full service (commercial & military) K-band reception
- H-bend configuration for 90 degree installation

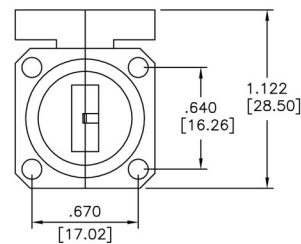
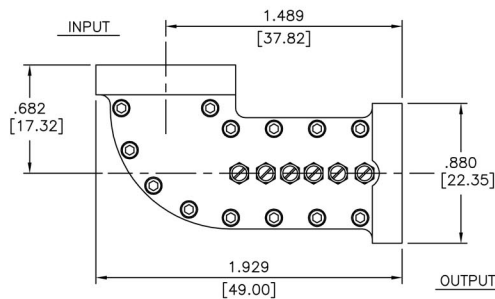
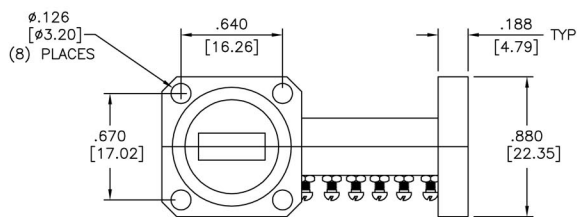
Specifications:

Passband:	17.3 - 21.2 GHz
Passband Insertion Loss:	0.10 dB Approx
Passband VSWR:	1.2:1 Max
Rejection:	40 dB Min from 27.5 - 29.3 GHz 60 dB Typ; 50 dB Min from 29.3 - 31.0 GHz
Group Delay Variation:	0.1 nS Max
Temperature Range:	-40°C to +75°C
Flanges:	See chart below
Dimensions:	1.929" x 0.88" x 1.122" (49 mm x 22 mm x 28.5 mm)
Finish:	White Lacquer



Flange Configurations

Model #	Input	Output
19082	WR42 Grooved	WR42 Cover
19082-1	WR42 Grooved	WR42 Grooved
19082-2	WR42 Cover	WR42 Grooved
19082-3	WR42 Cover	WR42 Cover



MICROWAVE FILTER CO., INC.
 6743 KINNE STREET, E. SYRACUSE, NY 13057
 E-Mail: mfcsales@microwavefilter.com

800-448-1666 • 315-438-4700
 Web: www.microwavefilter.com