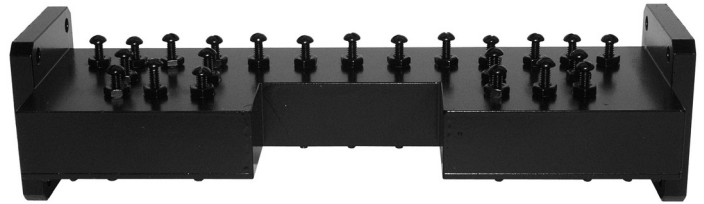




X-Band Transmit Reject Filter

Model 19170

By utilizing hybrid design techniques, the model 19170 receive band filter is able to achieve extremely low through loss with deep transmit band rejection.

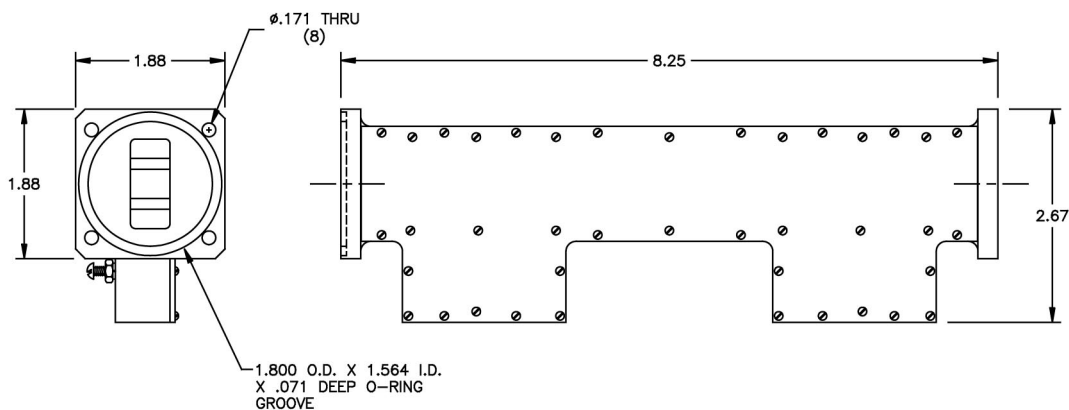


Specifications:

Passband:	7.25 - 7.75 GHz
Passband Loss:	0.3 dB Typ
Passband Return Loss:	20 dB Typ
Rejection:	90 dB Min from 7.9 - 8.4 GHz
Flanges:	See chart
Operating Temp. Range:	-10°C to +65°C
Weight:	0.75 lbs (0.34 Kg)
Dimensions:	8.25" x 1.88" x 2.67" (210mm x 48mm x 68mm)
Finish:	Flat Black Lacquer

Flange Configurations

Model	Input Flange	Output Flange
19170	WR112 Cover	WR112 Cover
19170-1	WR112 Grooved	WR112 Cover



MICROWAVE FILTER CO., INC.
 6743 KINNE STREET, E. SYRACUSE, NY 13057
 E-Mail: mfcsales@microwavefilter.com

800-448-1666 • 315-438-4700
 Web: www.microwavefilter.com