

MFC Ku-Band Transmit Reject Filter

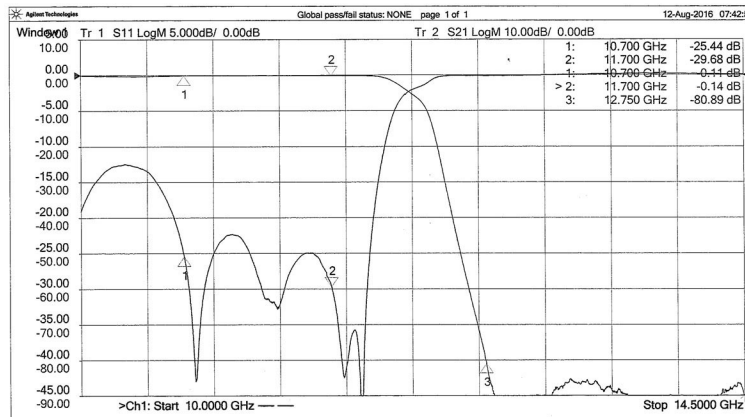
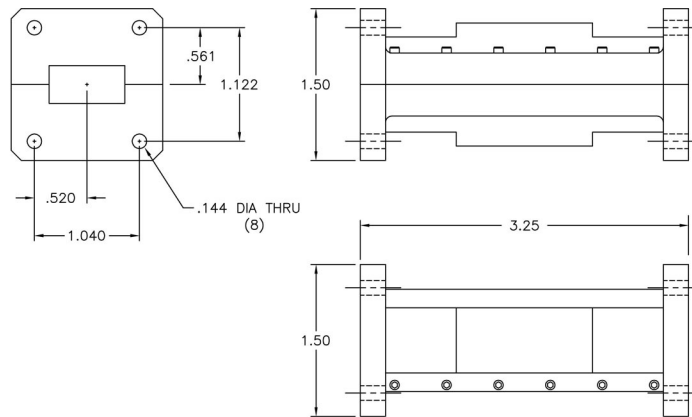
Model 19558

This bandstop filter provides deep rejection of the transmit band with minimal effect on the receive band.

Specifications:

Passband:	10.7 - 11.7 GHz
Passband Loss:	0.2 dB Typ
Passband VSWR:	1.25:1 Max
Rejection:	80 dB Typ / 70 dB Min from 12.75 - 14.50 GHz
Flanges:	WR75 Cover
Dimensions:	3.25" x 1.5" x 1.5" (82 mm x 38 mm x 38 mm)
Finish:	White Lacquer

Alternate Flange Configurations Are Available Upon Request



MICROWAVE FILTER CO., INC.
 6743 KINNE STREET, E. SYRACUSE, NY 13057
 E-Mail: mfcsales@microwavefilter.com

800-448-1666 • 315-438-4700
 Web: www.microwavefilter.com