

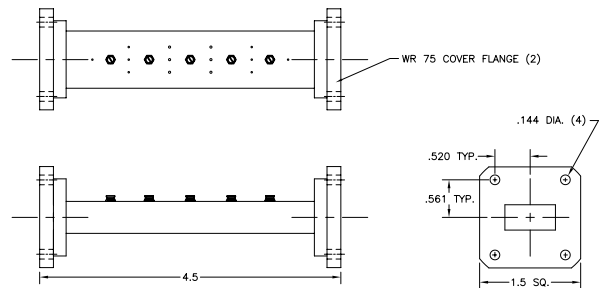
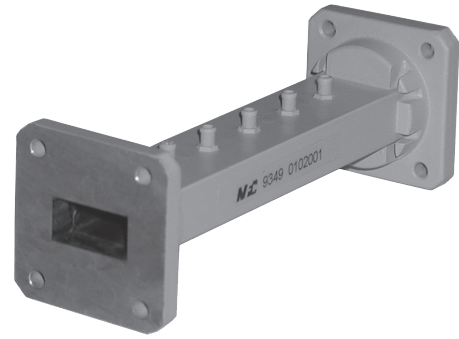
# MFC **Ku-Band Transmit Bandpass Filter**

## Model 9350

This uplink filter provides isolation from the downlink band of 11.7-12.2 GHz.

### Specifications:

Passband:	14.0 - 14.5 GHz
Insertion Loss:	0.5 dB Max
VSWR:	1.25:1 Max
Reject Bands:	10.55 - 10.68 GHz 11.7 - 12.2 GHz
Rejection:	50 dB Typ 10.55 - 10.68 GHz 60 dB Typ 11.7 - 12.2 GHz
Flanges:	WR75 Cover
Weight:	0.4 lbs (0.2 Kg)
Dimensions:	4.5" x 1.5" x 1.5" (114mm x 38mm x 38mm)
Finish:	Gray Lacquer



**MICROWAVE FILTER CO., INC.**  
 6743 KINNE STREET, E. SYRACUSE, NY 13057  
 E-Mail: [mfcsales@microwavefilter.com](mailto:mfcsales@microwavefilter.com)

800-448-1666 • 315-438-4700  
 Web: [www.microwavefilter.com](http://www.microwavefilter.com)