

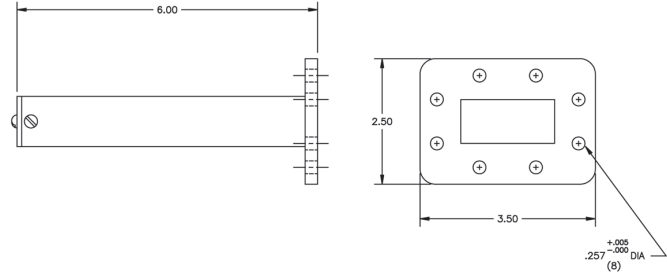


# Waveguide Termination

## WT187

### Specifications:

Frequency Range: 3.95-5.85 GHz  
VSWR: 1.05:1 Typ  
Power: 2 Watts Avg  
Flange: WR187 CPR



**MICROWAVE FILTER CO., INC.**  
6743 KINNE STREET, E. SYRACUSE, NY 13057  
E-Mail: [mfcsales@microwavefilter.com](mailto:mfcsales@microwavefilter.com)

800-448-1666 • 315-438-4700  
Web: [www.microwavefilter.com](http://www.microwavefilter.com)