

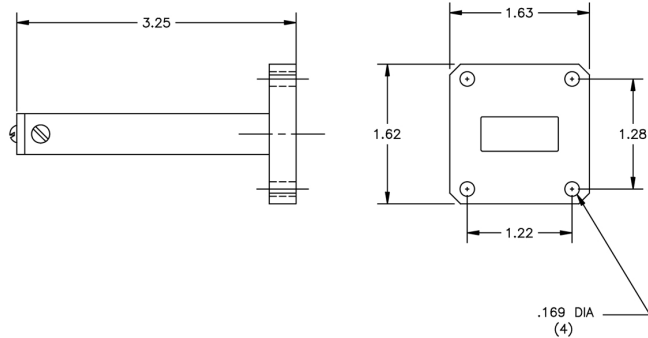


Waveguide Termination

WT90

Specifications:

Frequency Range: 8.2-12.4 GHz
VSWR: 1.05:1 Typ
Power: 2 Watts Avg
Flange: WR90 Cover



MICROWAVE FILTER CO., INC.
6743 KINNE STREET, E. SYRACUSE, NY 13057
E-Mail: mfcsales@microwavefilter.com

800-448-1666 • 315-438-4700
Web: www.microwavefilter.com