

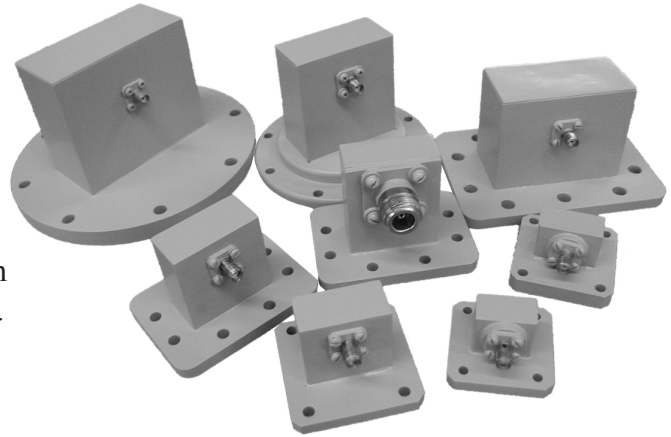


**Microwave Filter Company**

# WCA Series Waveguide-to-Coax Adaptors

MFC offers a large selection of Waveguide-to-Coaxial adaptors. The WCA series of adaptors are used to transition from coaxial (TEM) mode to the dominant waveguide (TE10) mode.

WCA Series Waveguide-to-Coax adaptors utilize sturdy copper construction. This combines long service life with the lowest possible insertion loss for a device of this type. If weight is an issue, WCA series adaptors can be built using 6061-T6 aluminum.



Used for applications requiring good VSWR characteristics over the entire waveguide band, WCA series adaptors are available with 1.25:1 VSWR over the operating band of the waveguide.

## FEATURES:

- Rugged Copper construction standard (Aluminum available)
- Low VSWR (1.25 max)
- High power custom units available

## MODEL DESIGNATION

Code	Description
------	-------------

- |   |   |
|---|---|
| 1 | Model No.   |
| 2 | Connector Code (waveguide/Coax) (see chart - pg 50) |

### SAMPLE

WCA430    CPR430/NF  
 1        —        2

Model #	Frequency (GHz)	Waveguide Size
WCA 430	1.7-2.6	WR 430
WCA 284	2.6-3.95	WR 284
WCA 229	3.3-4.9	WR 229
WCA 187	3.95-5.85	WR 187
WCA 159	4.9-7.05	WR 159
WCA 137	5.85-8.20	WR 137
WCA 112	7.05-10	WR 112
WCA 90	8.2-12.4	WR 90
WCA 75	10-15	WR 75
WCA 62	12.4-18	WR 62
WCA 42	18-26.5	WR 42
WCA 28	26.5-40	WR 28
WCA 22	33-50	WR 22

**E-Mail: [mfcsales@microwavefilter.com](mailto:mfcsales@microwavefilter.com)**

**Web: [www.microwavefilter.com](http://www.microwavefilter.com)**

800-448-1666 • 315-438-4700

6743 KINNE STREET, E. SYRACUSE, NY 13057



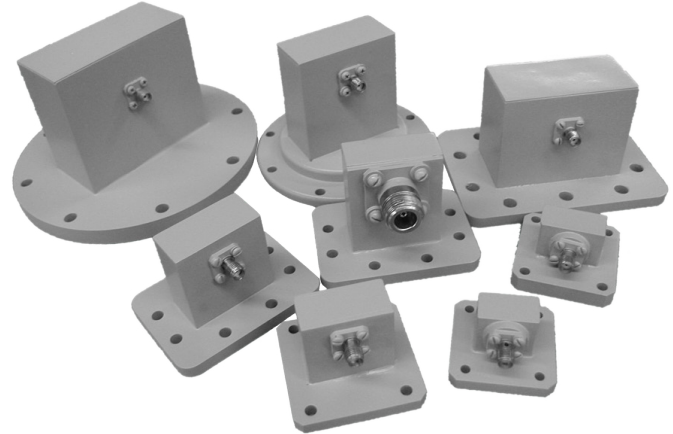
Microwave Filter Company

# WCA Series

## Waveguide-to-Coax Adaptors

### CONNECTOR CODE CHART

Connector Style	Connector Code
“N” Female	NF
“N” Male	NM
SMA Female	SF
SMA Male	SM
2.4 mm Female	24F
2.4 mm Male	24M
2.92 mm Female	KF
2.92 mm Male	KM
7/8” EIA	78
7/16” DIN	76D
CPR Flange	CPR#
CPRG Flange	CPRG#
CMR Flange	CMR#
UG Flange	UG#
Cover Flange	C#
Choke Flange	CH#



	AVAILABLE CONNECTOR TYPES										AVAILABLE FLANGE TYPES					
	NF	NM	SF	SM	24F	24M	KF	KM	78	76D	CPR	CPRG	CMR	UG	C	CH
<b>WCA430</b>	X	X	X	X					X	X	X	X				
<b>WCA284</b>	X	X	X	X					X	X	X	X	X			
<b>WCA229</b>	X	X	X	X					X	X	X	X				
<b>WCA187</b>	X	X	X	X						X	X	X	X			
<b>WCA159</b>	X	X	X	X							X	X	X			
<b>WCA137</b>	X	X	X	X			X	X			X	X	X			
<b>WCA112</b>	X	X	X	X			X	X			X	X	X	X	X	X
<b>WCA90</b>			X	X	X	X	X	X			X	X	X	X	X	X
<b>WCA75</b>			X	X	X	X	X	X			X	X		X	X	X
<b>WCA62</b>			X	X	X	X	X	X						X	X	X
<b>WCA42</b>					X	X	X	X						X	X	X
<b>WCA28</b>					X	X	X	X						X	X	X
<b>WCA22</b>					X	X								X	X	

**E-Mail: [mfcsales@microwavefilter.com](mailto:mfcsales@microwavefilter.com)**

**Web: [www.microwavefilter.com](http://www.microwavefilter.com)**

800-448-1666 • 315-438-4700

6743 KINNE STREET, E. SYRACUSE, NY 13057

**Contact Factory With Your Specific Needs For:**

- Electrical Performance
- Mechanical Configuration